

MONTH AT A GLANCE

On January 7, many of our youth begin Confirmation Class. It's our biggest class of confirmands in years! 14 of them, alongside their confirmation mentors, Pastor Emma, and our youth intern Austyn Long, will spend the semester asking questions of faith and exploring some of the fundamentals of what it means to be a follower of Jesus.

Most of our confirmands were baptized when they were infants. We do that as Presbyterians as a reminder that God claims us and loves us first and always--before we know who we're going to become or what we'll do with our life. God chooses us first!

The purpose of confirmation is to have a chance to respond to that gift from God. This class is a chance to choose faith seeking understanding, to seek deeper knowledge of God and engage questions so that our faith can come alive. In May, each of the confirmands will have the chance to share what they personally believe and, if they choose, to join the church as a sign that they want to continue that walk of faith and claim it as their own.

While this is an important step for our youth, it's an invitation for all of us. Our sermon series in January will take on some of the same questions the youth are exploring. The Faith Development Sunday School class will engage some faith fundamentals. As we begin a new year together, you have the opportunity to re-engage your faith, to ask real questions together, and to live your faith (and doubts too) right alongside our youth as we GROW TOGETHER. Be in prayer for our confirmands as they begin and put your prayers into action by engaging your own faith in worship, study, and service at Morningside.

WITH JOY IN THE JOURNEY, PASTOR KATIE

STEWARDSHIP & GENEROSITY: THANK YOU!

A big year-end WOW!!! Thank you for your consistent generosity throughout the year and into 2024. Your pledges for 2024 exceeded our ambitious goal! Your generosity is a testament to your faith. Now your job is to pray for the Session as they set the 2024 budget so that we can continue to serve God and our community with love, grace, and welcome for the coming year. The elders take the role of faithful stewardship of your generosity seriously and we have much to share in faith together.

For any final end-of-year giving questions, please contact treasurer Bill Humphries at billh6848@gmail.com. Mail postmarked by December 31 will count toward 2023 contributions unless otherwise marked.

WORSHIP TOGETHER IN JANUARY

As our youth kick off Confirmation this spring, we look at some of the key questions of our Christian faith together in worship as well. What do we believe about who Jesus is? Who is the Trinity? Is the God of the Old and New Testament the same? Who is the Holy Spirit? What does it mean to have faith? Bring your big questions as we engage faith seeking understanding.

JANUARY 7

What is Faith?

Hebrews 11:1-3 and Mark 10:46-52

Pastor Katie, Preaching

Communion

JANUARY 14

What authority does the Bible have?

Psalms 1:1-6

Pastor Emma, Preaching

Baptism

JANUARY 21

God and Covenant

Genesis 8:1-12, 9:8-17

Pastor Katie, Preaching

JANUARY 28

We're Christians...who is Christ?

Hebrews 4:14-16

Pastor Amanda, preaching



Morningside
PRESBYTERIAN CHURCH

2024 COMMITMENT SEASON

October 29, 2023

Count Me In!
165 households

We believe everyone from newborn to ninety is a vital part of the body of Christ.

Your contribution supports:

- worship and music for all ages
- children's & youth ministry
- adult formation & small groups
- mission to the community

We need your gifts to shine Christ's love at Morningside Presbyterian.

 \$850,000  165

For our facility that supports our ministries and the needs of the community

For our growing youth ministry

For our staff who will continue to provide excellent care

For our mission that shares the love of Jesus with the world

QR code: 

SCAN ME

This year, we hope to have the participation of 165 households to shine Christ's love at Morningside Presbyterian.

STAR WORDS POSTCARDS

Watch your mailboxes as the year begins!

Each Epiphany, we send out "star words". Epiphany is the season in which we take notice of the way that God is with us. As you discern God's movement in your own life, your word can serve as an guiding word or intention and can offer you a new way to pray. You should receive a star word in early January. We hope that these words will serve as a source of reflection and inspiration for the coming year.



SUNDAY SCHOOL AT MPC

Sunday School is taking a winter break, but all classes will resume on January 7 at 9:45am.

Morningside has a Sunday School class for every age and stage!

- Nursery - Newborn to 2 yrs. old
- Room 011 - 2 yrs. old through Kindergarten
- Room 003 - 1st Grade through 4th Grade
- Room 005 - 5th Grade and up (Youth)
- Youth Room - Confirmation Class
- Session Room - Devotional Drop-In: a casual class for adults that includes a check-in time, discussion, and fellowship.
- Room 201 - Faith Development: this class of adults studies a variety topics - theology, scripture, social issues, etc. - on a rotating basis. This is a great class to drop in for a particular season or attend weekly. Pastor Katie kicks off this class on January 7.
- Another way to get involved is to help lead a children's or youth class. Click the buttons below to sign up to teach children or youth.

[Children's Sunday School](#)

[Youth Sunday School](#)



NEW MEMBERS CLASS

Curious about membership at MPC? Attend the new member class on 1/21 and 2/4 at 9:45 am. Those ready will have the opportunity to join at the end of the second class. Contact [Pastor Katie](#) for more info.



PASTOR EMMA

As the year begins, we celebrate Pastor Emma's 6th work anniversary with us! We give thanks for her deep commitment as a pastor in her preaching, teaching, service and leadership! Be sure to thank her for all she offers MPC when you see her this month!



ANNUAL CONGREGATIONAL MEETING

Sunday, February 4 @ 12 pm

Save-the-date for our annual congregational meeting on 2/4/2024 following worship at 12 pm. Your Session is working throughout January and will provide you with information on the ways God is at work here through our ministries, our finances, our staff, and more.

MIDDLE GROUND MOVES TO THE 2ND & 4TH WEDNESDAYS



Middle Ground is a short-form casual worship service around the dinner table. We will revisit scripture from Sunday's service and leave time for small group discussion.

5:30-6:00 - Social time for adults in the Fellowship Hall and supervised time on the playground for children

6:00-6:30 - Dinner for all ages

6:30-7:00 - Middle Ground worship and discussion; Children are dismissed to choir or childcare



CHILDREN'S CHOIR

Resumes January 10 Children ages 4 through 3rd grade will rehearse at 6:30 pm on Wednesdays with an optional pizza dinner at 6 pm. Mark your calendars with the schedule below:

- Rehearsals January 10, 17, 24, 31
- Rehearsals February 7, 14, 28
- Sing Sunday, March 3
- Rehearsal March 13 & 20
- Rehearsals April 10, 17, 24 and May 1
- Sing for Children's Sabbath, May 5
- No rehearsals 2/21, 3/6, 3/27, or 4/3.

Choir will conclude on May 5. We look forward to helping these young singers prepare to lead in worship.



YOUTH DINNER SIGN UP

Sign ups are now open for youth group dinners in the spring semester. Click the button above to sign up to bring a meal to the wonderful MPC Youth in 2024!



BLESSING BAGS

A big thank you to Ken and Ellis Williams' Scout troop who recently prepared and donated "blessing bags" to the church. Occasionally we have visitors to the church

seeking assistance. While the church does not provide direct monetary assistance, we work closely with our mission partners like Intown Cares to support those in need. These blessing bags enhance those efforts toward partnership and hospitality by providing bags with info about our mission partners as well as a granola bar, small bottle of water, and a few hygiene supplies. Your elders, deacons and staff always do our best to welcome anyone who walks through our doors with the love of Christ--this is an additional way we can do that!

SATURDAY, FEBRUARY 3; 7 PM FUNDRAISER CONCERT

The Nancy Frampton
Rising Artists Series
at Morningside
Presbyterian Church



SPELLMAN COLLEGE
GLEE CLUB

On Saturday, February 3, 2024 at 7 pm, Morningside Presbyterian Church hosts a fundraising concert featuring the Spellman College Glee Club with donations going toward the Nancy Frampton Rising Artist Series. The Glee Club is Spellman College's premier performance organization which sings for most campus events. It has had the unique opportunity to perform with the Atlanta Symphony Orchestra, a world-renowned opera singer Jessye Norman, and as part of the annual Dr. Martin Luther King Jr. celebration. And now these superb singers will kick off the 2024 Season of the Nancy Frampton Rising Artist Concert Series. Tickets on sale now!

[Click here for tickets](#)



MPC GOOGLE CALENDAR

Click [here](#) to add the MPC Events calendar. This public calendar will help you keep track of all the church-wide events happening at the church. In the new year, we will add as many events and details that we have, so you can have them too!

CHRISTMAS TRIBUTES

In memory of...
Wink A. Davis, Jr.
by Austin & Douglas Davis-Selph

Marion Hickey Thomas
by Susan DePasquale

Sheilah Coffey
Sonny Gilmore
John M. Gehl
by The Gehls

Tom & Betty Fox
by Debbie Fox

Carolyn Landers
John Brown
Anne Brown
by Ellen & Jim Landers

Helen Hayes Perry
by Lynn Young

Frank C. Hawkins
Louise H. Hawkins
Mary N. Hancock
by Philip Hawkins

Norman "Andy" Anderson
by Nancy Anderson

In honor of...
Rev. Emma Neishloss
Rev. Amanda Kemery
Rev. Dr. Jonathan Crutchfield
Rev. Katie Owen Aumann
by Ginger & Joe Floyd

PICTURES OF DECEMBER

LGBT & FRIENDS

CLUB 46

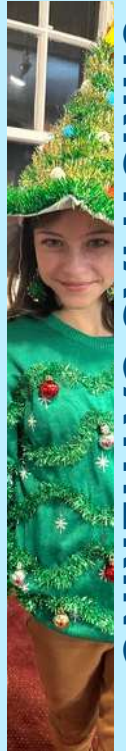
CHRISTMAS PARTY



NICHOLAS HOUSE



GIFT DRIVE



CHRISTMAS GATHERING



MIDDLE GROUND



ADVENT DINNER



CHILDREN'S

NATIVITY SERVICE



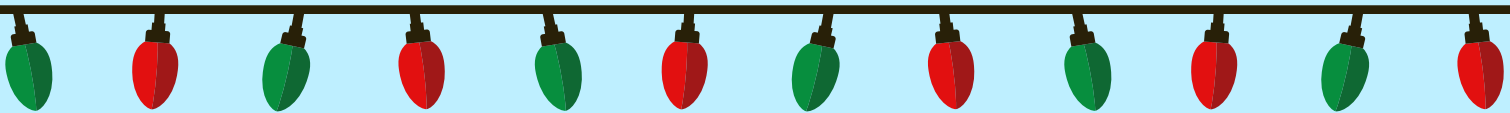
MPC @

WINTERFEST



MPC STAFF

CHRISTMAS LUNCH



CHRISTMAS PARTY

YOUTH GROUP



CHRISTMAS PARTY

THEOLOGY ON TAP



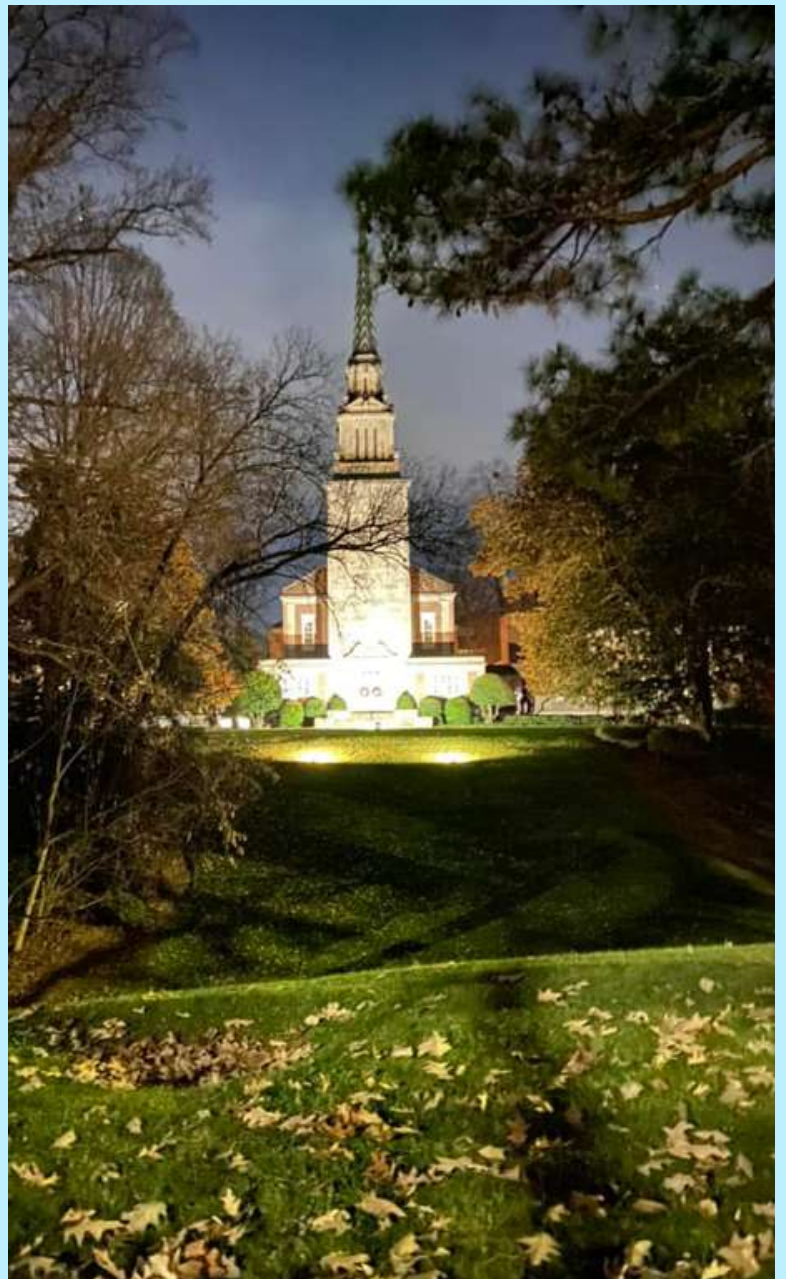
CAROLING

MIDDLE GROUND



CHRISTMAS EVE

@ MORNINGSIDE



Affinity Groups



MPC Couples & Friends

Saturday, 1/13 @ 2 pm; offsite

This group meets at Grana Restaurant at 1835 Piedmont Road next to Sprouts this month. Please RSVP to [Kathy Bremer](#) so she knows how many to expect.

Friends at Morningside

More information coming!

FAM, MPC's young adult group will meet in January. Stay tuned for more information. Email [Pastor Emma](#) for more info on the group.



men's coffee

MPC Men's Coffee

Fridays @ 8 am

Men at MPC are invited to stop-in for coffee and conversation. Meet at Press & Grind Coffee on Fridays at 8 am. Contact [Mark Gilbreath](#) for info.



Theology on Tap

Tuesday, 1/16 @ 7 pm; offsite

Theology on Tap meets on Tuesday, January 16 at 7 pm. Details on location and program topic to be determined! Stay tuned! Email [Pastor Emma](#) for more info on the group.



One Gray Hair

Wednesday, 1/17 @ 12 pm

One Gray Hair meets for lunch on Wednesday, January 17 at 12 pm in the Fellowship Hall



Women's Round Table

Monday, 1/29 @ 6 pm; offsite

Women's Round Table meets at Hillary McNeill's home on Monday, January 29 at 6 pm. Please let [Cindy Humphries](#) know if you can help with dinner. A program will be announced soon.



January Birthdays

- 1 JACK BREWSTER
- 2 JACK MCNEILL
- 4 JACK KLOTZ
- 4 KIM ROCKWOOD
- 5 ELLEN BEHM
- 5 MICHAEL BOORMAN
- 5 HOLLY CRAWFORD
- 5 JACK LADDS
- 6 MICHAEL LOWRY
- 6 SUZANNE WOLFE
- 7 JENNY BROD
- 8 KATRINA WEIS
- 8 ARABELLA WOLFE
- 9 WESLEY KING
- 10 ANNA HOLMAN
- 10 SHARI TANT
- 11 MIA SMITH
- 12 JACK KNEZEVICH
- 12 CAROLYN MORTON
- 12 JANE STACK
- 12 JOHN WATSON
- 13 VIVIENNE ANDERSON
- 13 MARY HAMPTON SMITH
- 13 KEN WILLIAMS
- 14 LYNN DANIEL
- 15 HAILEY MCPHERSON
- 15 JANE MCRAE
- 17 REX RUBY
- 17 HEATHER SCRIBNER
- 17 KATE SCRIBNER
- 18 VANESSA RYAN
- 19 WILLIAM KING
- 10 MADELINE SELNESS
- 19 TISH WOOLLEY
- 20 JEANNE MCCARTHY
- 20 MARSHALL WILLIAMS
- 21 EVE ROBERTS
- 22 STEPHEN SMITH
- 24 ROBERT LOVETT
- 24 JENNIFER WILLIAMS
- 26 NATHAN HARTMAN
- 26 BETH MCCLINTOCK
- 26 BRAD MILLARD
- 29 SUZANNE MACPHERSON



MISSION @ MORNINGSIDE

Researched & compiled
by Jill Klotz

SERVE TOGETHER

"No matter how hard the past, you can always begin again."
- Buddha



INTOWN CARES PANTRY NEEDS

Thank you for your generosity in the Intown Cares Advent Food Collection. The Pantry continues to have needs. Use this list to donate the current greatest needs. The items with an asterisk indicate items they are completely out of at the pantry.

Drop off donations at McIver Hall on Tuesdays, Fridays, and Saturdays from 9 a.m. - 12 p.m. Enter the pantry through the door on the right side. Please scan the QR code with your phone and fill out the form so that IC can record your donation. If you need a weight total, please be sure to let IC know at the time of donation that you are from MPC. Please do NOT donate expired foods.

- Ramen Noodles
- Shelf-Stable Milk*
- Pasta & Pasta Sauce*
- Fruit Cups
- SPAM*
- Instant Oatmeal/Grits*
- Bottled Water
- Utensil Packs
- Cereal
- Tuna Packets*
- Canned Veggies (pop-top)*
- Instant Coffee*
- Canned Meats*
- Peanut Butter & Jelly*
- Canned Soup (not condensed)



ATLANTA POINT-IN-TIME NIGHT COUNT

Volunteer registration for the 2024 Atlanta Point-in-Time Night Count coordinated by Partners for HOME is open! Pastor Emma and Suzanne Macpherson are on Team 12! Teams 4, 7, and 12 will be led by Intown Cares Staff. The Atlanta Point-in-Time Count gives the City of Atlanta and its partner agencies valuable information on the homeless population that makes it possible to strategically target resources for optimal results. Our teams will be surveying the unsheltered homeless who are sleeping in outdoor locations such as sidewalks, parks, encampments, and under bridges. The surveys will provide demographic information on each homeless individual, give insight into their homeless history, and assess individual needs that will enable the Continuum to effectively plan housing and service interventions to prevent and end homelessness in Atlanta.

NOTE: The Point-in-Time Night Count is an overnight event. Volunteers will report to St. Luke's Episcopal Church on the evening of January 22. The count will take place from 7 p.m. Monday, January 22 to about 3 a.m. Tuesday, January 23. Volunteers must be 18 years or older.

[Register Here](#)

GROCERY DELIVERY



INTOWN CARES

[Sign up here](#) to deliver groceries to Maggie Russell Towers. *New dates for 2024 are available!* Each delivery date can use a driver and a ride along helper. Meet at MPC at 10:15 am, and then travel to Intown Cares where you load groceries into van at 10:30 am then head out for delivery. Deliveries take 1-2 hours.



- Hats
- Coats
- Hand/Foot Warmers
- Sleeping Bags
- Gloves
- Socks
- Blankets

DONATE COLD WEATHER GEAR

Donate new and gently used cold weather gear to Intown Cares for our neighbors. Drop off your donations at the Food Pantry, Fridays 9am-12pm. Email Laura DeGroot laura.degroot@intowncares.org if you need to arrange an alternate drop-off day or time.

DECEMBER TORNADO RELIEF

Click [here](#) for information on how to donate to Presbyterian Disaster Assistance to help those whose lives were altered by the deadly tornadoes that ripped across several states in early December.

God is our refuge and strength



The light shines in the darkness, and the darkness did not overcome it. (John 1:9)

CSM DINNER

Saturday,
January 23 @ 6 pm



MPC is hosting dinner for our friends at Clifton Sanctuary Ministries on Saturday January 23rd at 6: p.m. If you would like to help, please contact Clifton shepherds [Ann Watson](#) or [Joe Floyd](#).

SUPPORT THE MEN OF CLIFTON

Here are ways to financially support the men of Clifton Sanctuary Ministries:

- \$52.50 for a Marta Breeze 10 Pack Round Trip
- \$200 Guest Incidentals for a month (supplies, food items, tv service, etc.)
- \$500 Office Expenses for a month (supplies, printing, copying, etc.)
- \$2,300 Utility Bills for a month
- \$3,000 Food Expenses for the entire year

Contact [Leslie Prince](#) for more info.



MOWA UPDATE

Meals-on-Wheels Atlanta has been an outreach partner of MPC since 1981. Over the years, deliveries to people living in their own homes has declined. Due to changes with MOWA's other partners, unfortunately MPC will no longer be delivering meals. Many thanks to all who have volunteered with MOWA, faithfully and humbly serving as MPC shepherds for many, many years. *I was hungry and you kindly brought me food.*

- Martin Dunlap & Grayson Thagard
- Sarah & Richard Brownlee
- Mary Chapman
- Nancy Lane
- Nancy Hamilton
- Ann Watson
- Jack Klotz
- Emilie Paille
- Julie Green
- Kim Nuckols
- Anne Barnette



COMPOST NOW

Since August, Morningside has been using Compost Now, which means we are composting all food products. You will see the black bins at our events with food. [Here](#) is a list of what is compostable and here is our latest report of how we are doing.

Why is this important? The United States throws away about a third of its total food supply each year. And when food waste breaks down in landfills it releases methane, a powerful greenhouse gas. Food waste is responsible for more than half of all methane emissions from landfills, despite making up less than a quarter of the total waste inside. Every little bit of methane pollution that we can stop will make a big impact for our climate. As a heat-trapping gas, methane is 28 times more potent than carbon dioxide over the short-term.

Help us in our composting effort and think of ways you can reduce waste and compost in your own home.

MLK WORDAY

Monday, January 15
@ Memorial Drive Ministries

Please join us on for our annual MLK workday on Monday, January 15 at Memorial Drive Ministries. We start at 9:30 am

and end around 1:30 pm. We will work in the playground, the nature area, and clean up the church entrance area. Bring a water bottle and work gloves. This is a family-friendly, all-ages-all-stages event. Contact [Lloyd Prince](#) for more info. Click the button to sign up!



[MLK Workday Sign Up](#)

EMRAN AFGHAN FAMILY

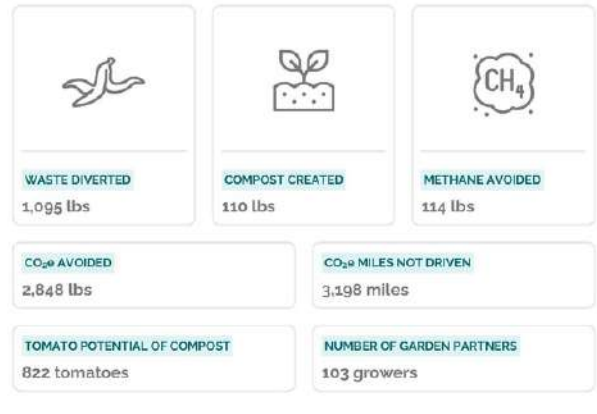
Our refugee family, the Emrans, welcomed their baby boy Tawob, on November 26, a month earlier than expected. He weighed three pounds and was born with a defect developed early during pregnancy. Since then he has been and continues to be at Children's Hospital at Egleston. The hope is that he will be able to come home in the next couple weeks when he gains enough weight. He's a darling little boy and his mom is doing well and visits him every day that she can.

Dad has lost work time over the past few weeks and cannot afford to miss more. Please contact [Holly Campbell](#) if you could give Mom a ride from the east side of town to visit the baby in the hospital and then take her back home after the visit. In the meantime, prayers for Tawob's full recovery are appreciated. So many thanks to those of you who purchased needed supplies and donated gift cards. They are so grateful.

Morningside Presbyterian Church

Impact Report

Thank you for your commitment to sustainable business practices. This report highlights the impact from your program.



Sources and Formulas

Member Since: 08/02/2023
Report Date: 12/01/2023



SUN	MON	TUE	WED	THU	FRI	SAT
	1 Church Offices Closed 	2 1 Staff meeting	3 MPP Returns 7:30 Chancel Choir Rehearsal	4 12 Centering Prayer 4 Tai Chi Class	5 8 Men's Coffee (Offsite)	6 9 Grace AA Group
7 Baptism of the Lord 9:45 Sunday School 11 Worship with Communion 12:30 Deacons Mtg 12:30 Mission Mtg 6 Youth Group	8 9 Partner with the Preacher	9 10:15 IC Grocery Delivery 11 Gentle Yoga 1 Full Staff meeting 7:30 Handbell Choir Rehearsal	10 5:30 Middle Ground & MPC Kids! 6:30 Children's Choir 7:30 Chancel Choir Rehearsal	11 12 Centering Prayer 4 Tai Chi Class	12 8 Men's Coffee (Offsite)	13 9 Grace AA Group 6 MPC Couples & Friends (Offsite)
14 9:45 Sunday School 11 Worship & Baptism 12 Fellowship	15 MLK Day  9:30 Workday at Memorial Drive	16 11 Gentle Yoga 1 Staff meeting 7 Theology on Tap (offsite) 7:30 Handbell Choir Rehearsal	17 11 Dobbs Reading Buddies (Offsite) 11 Finance Mtg 12 One Gray Hair Lunch 6:30 Children's Choir 7:30 Choir Rehearsal	18 12 Centering Prayer 4 Tai Chi Class	19 8 Men's Coffee (Offsite) 5 Club 46	20 9 Grace AA Group
21 9:45 New Members Class & Sunday School 11 Worship 12:30 RHO Readers 6 Youth Group	22 9 Partner with the Preacher 7 Session Mtg	23 10:15 IC Grocery Delivery 11 Gentle Yoga 1 Staff meeting 7:30 Handbell Choir Rehearsal	24 5:30 Middle Ground & MPC Kids! 6:30 Children's Choir 7:30 Chancel Choir Rehearsal	25 12 Centering Prayer 4 Tai Chi Class	26 8 Men's Coffee (Offsite)	27 9 Grace AA Group 5 Clifton Dinner
28 9:45 Sunday School 11 Worship & Handbells 12 Fellowship	29 9 Partner with the Preacher 6:30 Women's Roundtable (Offsite)	30 11 Gentle Yoga 1 Staff meeting 7:30 Handbell Choir Rehearsal	31 6:30 Children's Choir 7:30 Chancel Choir Rehearsal			